

T811 (038)

| REF | T811 | T811 |
|----------------|------|------|
| Ø (1/10 mm) | 033 | 037 |
| Körnung / Grit | | |
| | 6 | 6 |
| L (mm) | 4,2 | 7,0 |

T368 (257)

| REF | T368 | T368 |
|----------------|------|------|
| Ø (1/10 mm) | 016 | 023 |
| Körnung / Grit | | |
| | 10 | 10 |
| L (mm) | 3,5 | 5,0 |

T830 (238)

| REF | T830 | T830 | T830 |
|----------------|------|------|------|
| Ø (1/10 mm) | 012 | 014 | 016 |
| Körnung / Grit | | | |
| | 10 | 10 | 10 |
| L (mm) | 2,7 | 2,7 | 2,7 |

T830L (239)

| REF | T830L | T830L | T830L | T830L | T830L |
|----------------|-------|-------|-------|-------|-------|
| Ø (1/10 mm) | 012 | 014 | 016 | 018 | 021 |
| Körnung / Grit | | | | | |
| | 10 | 10 | 10 | 10 | 10 |
| L (mm) | 4,0 | 5,0 | 5,0 | 5,0 | 5,0 |

T836 (110)

| REF | T836 | T836 |
|----------------|------|------|
| Ø (1/10 mm) | 012 | 014 |
| Körnung / Grit | | |
| | 10 | 10 |
| L (mm) | 6,0 | 6,0 |

T837 (111)

| REF | T837 | T837 | T837 |
|----------------|------|------|------|
| Ø (1/10 mm) | 012 | 014 | 016 |
| Körnung / Grit | | | |
| | 10 | 10 | 10 |
| L (mm) | 8,0 | 8,0 | 8,0 |

T837L (112)

| REF | T837L |
|----------------|-------|
| Ø (1/10 mm) | 016 |
| Körnung / Grit | |
| | 10 |
| L (mm) | 10,0 |

T838 (243)

| REF | T838 |
|----------------|------|
| Ø (1/10 mm) | 014 |
| Körnung / Grit | |
| | 10 |
| L (mm) | 4,0 |

T848 (173)

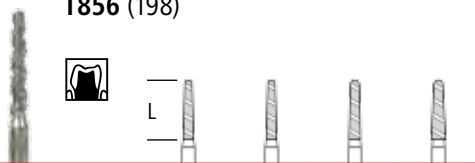
| REF | T848 | T848 |
|----------------|------|------|
| Ø (1/10 mm) | 016 | 018 |
| Körnung / Grit | | |
| | 10 | 10 |
| L (mm) | 10,0 | 10,0 |

T850 (199)

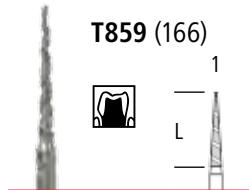
| REF | T850 | T850 | T850 | T850 |
|----------------|------|------|------|------|
| Ø (1/10 mm) | 012 | 014 | 016 | 018 |
| Körnung / Grit | | | | |
| | 10 | 10 | 10 | 10 |
| L (mm) | 10,0 | 10,0 | 10,0 | 10,0 |

T850L (200)

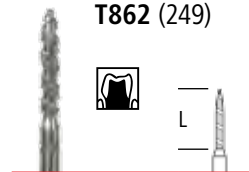
| REF | T850L | T850L |
|----------------|-------|-------|
| Ø (1/10 mm) | 014 | 016 |
| Körnung / Grit | | |
| | 10 | 10 |
| L (mm) | 11,5 | 11,5 |

T856 (198)


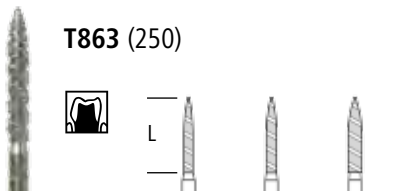
| REF | T856 | T856 | T856 | T856 |
|----------------|------|------|------|------|
| Ø (1/10 mm) | 014 | 016 | 018 | 021 |
| Körnung / Grit | | | | |
| | 10 | 10 | 10 | 10 |
| L (mm) | 8,0 | 8,0 | 8,0 | 8,0 |

T859 (166)


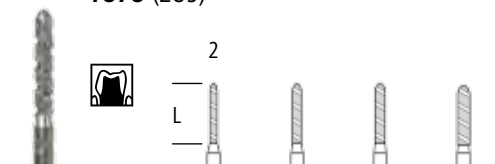
| REF | T859 |
|----------------|------|
| Ø (1/10 mm) | 016 |
| Körnung / Grit | |
| | 10 |
| L (mm) | 10,0 |

T862 (249)


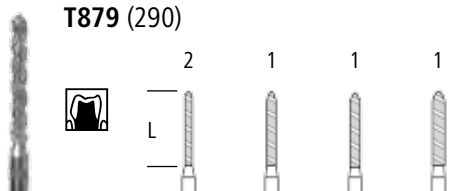
| REF | T862 |
|----------------|------|
| Ø (1/10 mm) | 012 |
| Körnung / Grit | |
| | 10 |
| L (mm) | 8,0 |

T863 (250)


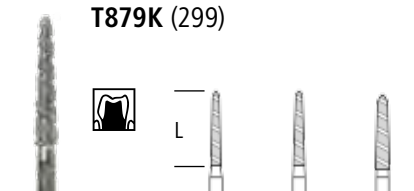
| REF | T863 | T863 | T863 |
|----------------|------|------|------|
| Ø (1/10 mm) | 014 | 016 | 021 |
| Körnung / Grit | | | |
| | 10 | 10 | 10 |
| L (mm) | 10,0 | 10,0 | 10,0 |

T878 (289)


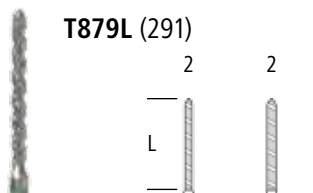
| REF | T878 | T878 | T878 | T878 |
|----------------|------|------|------|------|
| Ø (1/10 mm) | 012 | 014 | 016 | 018 |
| Körnung / Grit | | | | |
| | 10 | 10 | 10 | 10 |
| L (mm) | 8,0 | 8,0 | 8,0 | 8,0 |

T879 (290)


| REF | T879 | T879 | T879 | T879 |
|----------------|------|------|------|------|
| Ø (1/10 mm) | 012 | 014 | 016 | 018 |
| Körnung / Grit | | | | |
| | 10 | 10 | 10 | 10 |
| L (mm) | 10,0 | 10,0 | 10,0 | 10,0 |

T879K (299)


| REF | T879K | T879K | T879K |
|----------------|-------|-------|-------|
| Ø (1/10 mm) | 016 | 018 | 021 |
| Körnung / Grit | | | |
| | 10 | 10 | 10 |
| L (mm) | 10,0 | 10,0 | 10,0 |

T879L (291)


| REF | T879L | T879L |
|----------------|-------|-------|
| Ø (1/10 mm) | 012 | 014 |
| Körnung / Grit | | |
| | 10 | 10 |
| L (mm) | 12,0 | 12,0 |

Körnungen / Types of grit

- SC Supergrob (180 µm)
Supercoarse
- C Grob (151 µm)
Coarse

T881 (141)

| REF | T881 | T881 | T881 | T881 |
|----------------|------|------|------|------|
| Ø (1/10 mm) | 012 | 014 | 016 | 018 |
| Körnung / Grit | 10 | 10 | 10 | 10 |
| L (mm) | 8,0 | 8,0 | 8,0 | 8,0 |

T882 (142)

| REF | T882 | T882 |
|----------------|------|------|
| Ø (1/10 mm) | 012 | 014 |
| Körnung / Grit | 10 | 10 |
| L (mm) | 10,0 | 10,0 |

T885 (130)

| REF | T885 | T885 |
|----------------|------|------|
| Ø (1/10 mm) | 012 | 014 |
| Körnung / Grit | 10 | 10 |
| L (mm) | 8,0 | 8,0 |

T886 (298)

| REF | T886 | T886 | T886 |
|----------------|------|------|------|
| Ø (1/10 mm) | 012 | 014 | 016 |
| Körnung / Grit | 10 | 10 | 10 |
| L (mm) | 10,0 | 10,0 | 10,0 |

VORTEILE / ADVANTAGES

- Geringe Wärmeentwicklung, daher verminderte Gefahr der Pulpaverletzung, sauberer Schliff, keine Rillen.
Low heat generation, which reduces the risk of damage to the pulp, clean cut, no gutters.
- Großer Spanraum und optimaler Abtransport des Schleifgutes.
Large chip space and ideal chip removal.
- Bestens geeignet zur Stumpfpräparation und zum Entfernen von Amalgam, Composit etc.
Suited for stump preparation and removal of amalgam, composites etc.
- Selbstreinigend, dadurch höhere Standzeit.
Self-cleaning, ensuring long service life.
- Extreme Bruchfestigkeit durch Verwendung hochwertiger Rohstoffe und Einsatz speziell entwickelter Technologien und Produktionsverfahren.
Extreme breaking strength by the use of high-quality raw materials and specifically developed technologies and manufacturing processes.

